



OMNIPOWER

THE POWER OF CHOICE

10W ~ 50W

POLYCRYSTALLINE PV SOLAR PANEL MODULES

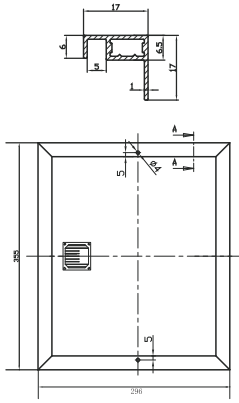
Aluminium frame

Bypass diodes to reduce loss in
partial shadow

IP65

CE Standard

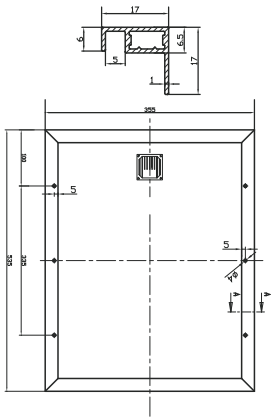
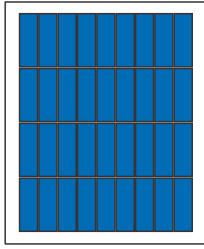




OMNI-10-PR Polycrystalline module 36 cells

Peak Power (Pmax)	10W
Open circuit voltage (Voc)	21.3V
Voltage at Pmax (Vmp)	16.8V
Short circuit current (Isc)	0.71A
Current at Pmax (Imp)	0.60A
Power tolerance range	± 3%
Maximum System Voltage	DC1000V

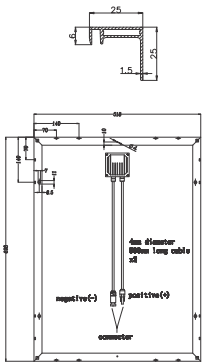
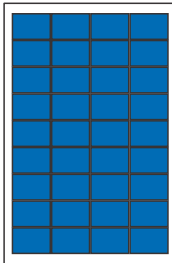
Temperature Range	-40°C ~ +80°C
Weight	1.3kg
Dimensions (L x W x H mm)	356 x 298 x 18
All technical data standard	AM1.5 E=1000W/m ²
test condition:	Tc=25°C
Module Application:	Class A



OMNI-20-PR Polycrystalline module 36 cells

Peak Power (Pmax)	20W
Open circuit voltage (Voc)	21.7V
Voltage at Pmax (Vmp)	17.7V
Short circuit current (Isc)	1.23A
Current at Pmax (Imp)	1.13A
Power tolerance range	± 3%
Maximum System Voltage	DC1000V

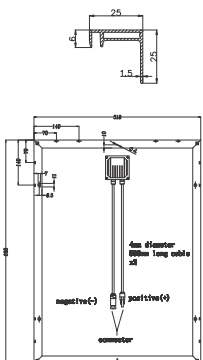
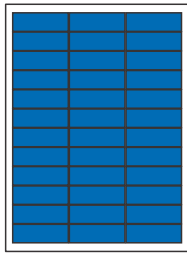
Temperature Range	-40°C ~ +80°C
Weight	2.3kg
Dimensions (L x W x H mm)	537 x 357 x 18
All technical data standard	AM1.5 E=1000W/m ²
test condition:	Tc=25°C
Module Application:	Class A



OMNI-40-PR Polycrystalline module 36 cells

Peak Power (Pmax)	40W
Open circuit voltage (Voc)	21.6V
Voltage at Pmax (Vmp)	17.4V
Short circuit current (Isc)	2.57A
Current at Pmax (Imp)	2.31A
Power tolerance range	± 3%
Maximum System Voltage	DC1000V

Temperature Range	-40°C ~ +80°C
Weight	4.5kg
Dimensions (L x W x H mm)	700 x 520 x 25
All technical data standard	AM1.5 E=1000W/m ²
test condition:	Tc=25°C
Module Application:	Class A



OMNI-50-PR Polycrystalline module 36 cells

Peak Power (Pmax)	50W
Open circuit voltage (Voc)	22.1V
Voltage at Pmax (Vmp)	17.9V
Short circuit current (Isc)	3.11A
Current at Pmax (Imp)	2.80A
Power tolerance range	± 3%
Maximum System Voltage	DC1000V

Temperature Range	-40°C ~ +80°C
Weight	4.5kg
Dimensions (L x W x H mm)	700 x 520 x 25
All technical data standard	AM1.5 E=1000W/m ²
test condition:	Tc=25°C
Module Application:	Class A

